



## 28 Meadowburn Road

, Wishaw, ML2 8LB

**Offers over £108,000**

Unexpectedly back on the market!!

A bright, spacious and extremely well maintained end terraced villa

The accommodation is formed over two levels and comprises, on the ground floor, entrance hallway, large lounge with bay window and fitted modern dining kitchen with integrated double oven and hob. On the upper level are three bedrooms and shower room.

Further benefits include double glazing, gas central heating, landscaped gardens to front and rear with a driveway to the side providing ample off street parking.

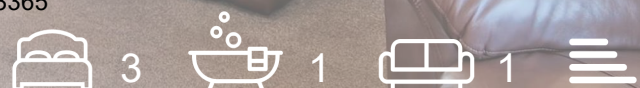
Meadowburn Road is located close to central Wishaw which offers a wide range of shopping facilities, sports facilities, pubs, restaurants, bistros, and schooling. There are also excellent bus and train services linking the surrounding towns and cities and for those commuting by car, there is access to the M74 both North and Southbound which in turn links to the M8 to Glasgow and Edinburgh.

EPC D

### Viewing

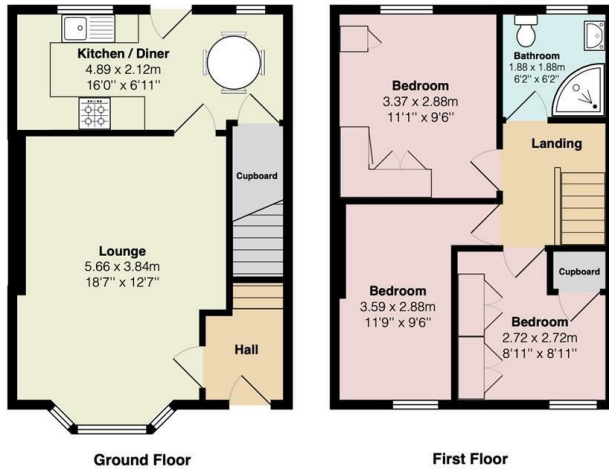
Please contact our Pomphreys Properties Ltd Office on 01698373365 if you wish to arrange a viewing appointment for this property or require further information.

- An Immaculate End Terraced Villa
- Three Bedrooms
- Driveway for ample cars
- Fitted Modern Dining Kitchen
- Double Glazing
- Gas Central Heating



## Floor Plan

28 Meadowburn Road, Wishaw



Total Area: 69.5 m<sup>2</sup> ... 748 ft<sup>2</sup>

All measurements are approximate and for display purposes only



## Area Map



## Energy Efficiency Graph



These particulars, whilst believed to be accurate are set out as a general outline only for guidance and do not constitute any part of an offer or contract. Intending purchasers should not rely on them as statements of representation of fact, but must satisfy themselves by inspection or otherwise as to their accuracy. No person in this firm's employment has the authority to make or give any representation or warranty in respect of the property.